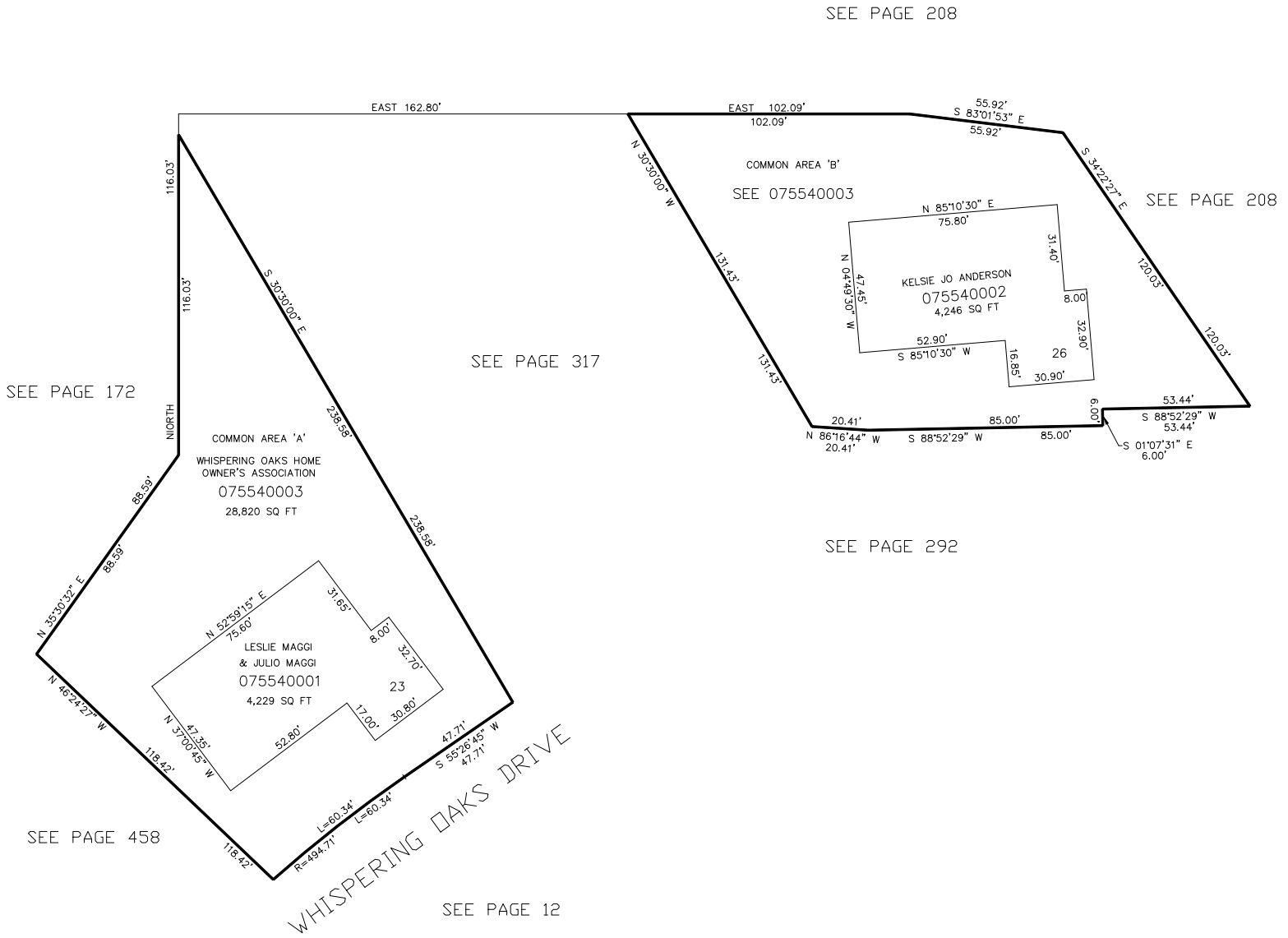


PART OF THE E.1/2, OF SECTION 15, T.5N., R.1W., S.L.B. & M.
WHISPERING OAKS PHASE 11

IN OGDEN CITY
SCALE 1" = 30'

TAXING UNIT: 25



10' UTILITY & DRAINAGE EASEMENTS EACH
SIDE OF PROPERTY LINES AS INDICATED
BY DASHED LINES EXCEPT AS OTHERWISE
SHOWN.

FOR COMPLETE ENG DATA SEE
ORIGINAL DEDICATION PLAT IN
BOOK 51, PAGE 25 OF RECORDS.